

# BenefitMAP





Harnessing The Power Of Data And Analytics To Deliver Optimal And Sustainable Employee Health And Benefits

## Decision Making Through The Use Of Data & Analytics

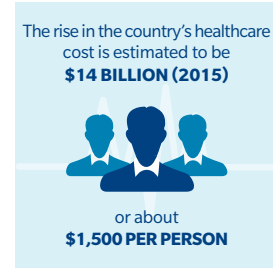
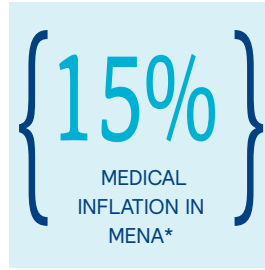
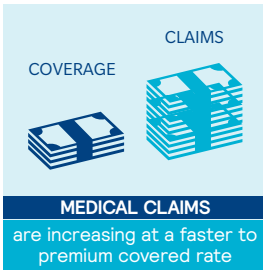
In this challenging environment, employers have to find a balance between meeting their company's expense expectations and effectively caring for their employee's. In order to achieve this equilibrium, leaders need a historical and future view in order to allocate capital, manage expectations, and achieve results – they need to see what is around the next corner!

The rising cost of medical insurance is one of the most significant challenges facing employers across the Middle East and North Africa (MENA). Over the past few years, we have witnessed a surge in medical inflation across the region. Increased incidences of chronic diseases, rapid population growth and the introduction of compulsory medical insurance are the core factors driving up the cost of employee health benefits.

## What's driving medical insurance increases


 <p>A relatively <b>YOUNG</b>, yet <b>RAPIDLY AGING</b> population</p>	<p>Growing incidence of <b>CHRONIC DISEASE</b>, particularly among those in their 30s and 40s</p> 	 <p>A population that is <b>LIVING LONGER BUT WITH MORE ILLNESS</b></p>	<p>Providers and facilities that <b>DO NOT</b>, have the capacity and technology to <b>MEET THE GROWING DEMAND</b></p> 
---	---	--	--

## The Consequences of Medical Insurance Increases



## Why BenefitMap

BenefitMAP is a groundbreaking and award winning platform that enables employers to make informed decisions on their employee health and benefits using real-time data based on their unique employee census data. BenefitMAP provides:




**A FORWARD LOOK**

BenefitMAP delivers a clear, informed view of future costs of coverage and potential savings



**A CUSTOMIZED FINANCIAL VIEW**

BenefitMAP combines claims benchmarking with customized plan design to enable clients and prospects to assess predicted costs and potential savings tailored to their specific needs.



**OPTIMAL DECISIONS**

BenefitMAP delivers a transparent view into a company's cost of coverage, helping employers determine optimal plan design and savings initiatives, over 5-years.

## BenefitMAPSUMMARY

Employers can find the right balance between effectively caring for their employees and managing costs through the use of data and analytics. By harnessing the power of employee census data; BenefitMAP can provide an analysis of how an employer compares to a peer, offer insights into what will happen if no changes are made to an medical plan and deliver solutions on how to mitigate cost increases.

Delivering optimal and sustainable employee health and benefits is achievable.



---

\* Mercer Marsh Benefits, *Medical Trends Around the World*, July 2017; available at <http://mercerc-marsh-benefits.marsh.com/2017MedicalTrendsAroundtheWorldMENA.aspx>

### About Mercer Marsh Benefits

Mercer Marsh Benefits provides clients with a single source for managing the costs, people risks and complexities of employee benefits. The network is a combination of Mercer and Marsh local offices around the world, plus country correspondents who have been selected based on specific criteria. Our benefits experts, located in 135 countries and servicing clients in more than 150 countries, are deeply knowledgeable about their local markets. Through our locally established businesses, we have a unique, common platform that allows us to serve clients with global consistency and locally unique solutions.

For further information, please contact your local Marsh office or visit our web site at: [www.mercer-marsh-benefits.marsh.com](http://www.mercer-marsh-benefits.marsh.com)

#### NAGEEN SATTAR

Mercer Marsh Benefits  
Practice Leader, UAE  
+971 50 458 0801  
[nageen.sattar@mercermarshbenefits.com](mailto:nageen.sattar@mercermarshbenefits.com)

Marsh Emirates Insurance Brokerage LLC

Broker registration number: 23

A Limited Liability Company incorporated in the Emirate of Dubai, United Arab Emirates. Paid-up Capital Dh. 3,000,000.

Commercial Registry No. 42090.

IMPORTANT NOTICE: This document does not constitute or form part of any offer or solicitation or invitation to sell by either Marsh to provide any regulated services or products in any country in which either Marsh has not been authorized or licensed to provide such regulated services or products. You accept this document on the understanding that it does not form the basis of any contract.

The availability, nature and provider of any services or products, as described herein, and applicable terms and conditions may therefore vary in certain countries as a result of applicable legal and regulatory restrictions and requirements.

Please consult your Marsh consultants regarding any restrictions that may be applicable to the ability of Marsh to provide regulated services or products to you in your country.

© Copyright 2017 Marsh Emirates Insurance Brokerage LLC. All rights reserved.

مارش اميريتس لوساطة التأمين ش.ذ.م.م

رقم القيد في السجل: ٣٢