

ADVISER

CHECKS ON PRIVATELY OWNED RESIDENTIAL BLOCKS

We would like to bring to your attention this guidance note recently issued by the British Property Federation (BPF) concerning support for the inspection and identification of cladding in private residential buildings available from the Department for Communities and Local Government.

IAN FLETCHER, DIRECTOR OF
POLICY (REAL ESTATE)
OF THE BPF WROTE:



In the wake of the horrific events at Grenfell Tower, government made a commitment to ensure that a full enquiry into the nature of the fire and how it started is undertaken. As part of this work, the Department for Communities and Local Government (DCLG) is keen to make owners, landlords, and managers of private residential blocks aware of the help that is available with regards to building checks.

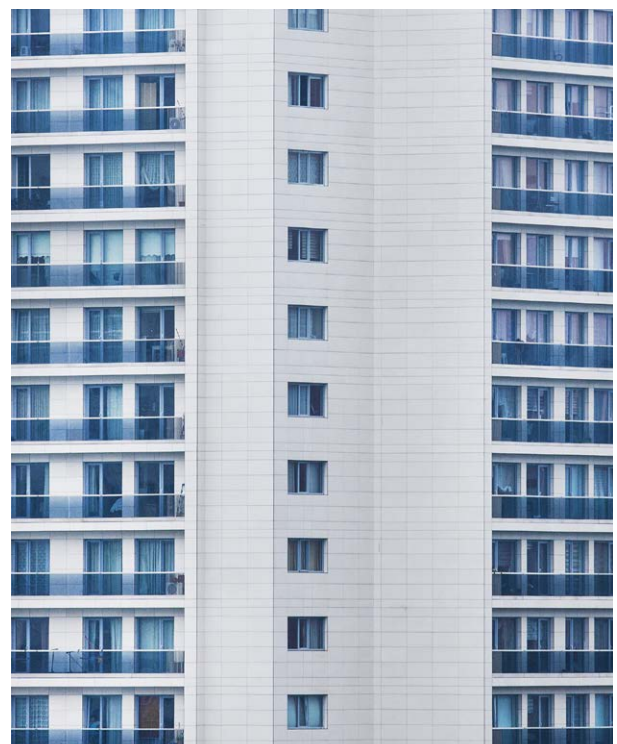
Public concern has centred around the potential flaws in the cladding that was on Grenfell Tower and whilst investigations are ongoing into the exact nature of the fire and why it spread so quickly, it is clear that additional safety checks can be made with regards to cladding used on buildings.

DCLG is therefore seeking to offer the following service:

- In addition to the checks on residential blocks owned by social landlords, DCLG are offering private owners of residential buildings an opportunity to test cladding on blocks over 18 metres high through arrangements put in place with the Building Research Establishment (BRE).
- These checks will be paid for by DCLG, and the information will be available to DCLG from BRE.
- Where owners consider that they may have concerns about cladding on buildings over 18 metres high, they should follow the process in this [letter](#).
- DCLG have provided an email for enquiries: PRShousingchecks@communities.gsi.gov.uk

DCLG is keen to reach out to as many people as possible and the attached letter provides you with further information on the service it is offering. Should you wish to make use of this service, please fill out and return the [form](#).

Many in the industry have responded to urgent appeals made across the media and this is a further step that can be taken to ensure that an incident like Grenfell Tower is prevented from ever happening again.



Marsh's local and global specialists are available to assist clients with both pre- and post-event concerns, including insurance programme management, business continuity planning, property inspections, crisis management, and claims.

For more information, please contact a colleague below.

JOHN DILLEY
T: +44 (0) 20 7178 3834
M: +44 (0) 7879 007 528
john.dilley@marsh.com

IAN KENNETT
T: +44 (0) 20 7357 2394
M: +44 (0) 7947 506 463
ian.kennett@marsh.com

This publication contains third party content and/or links to third party websites. Links to third party websites are provided as a convenience only. Marsh is not responsible or liable for any third party content or any third party website nor does it imply a recommendation or endorsement of such content, websites, or services offered by third parties.

The information contained herein is based on sources we believe reliable and should be understood to be general risk management and insurance information only. The information is not intended to be taken as advice with respect to any individual situation and cannot be relied upon as such.

Marsh Ltd is authorised and regulated by the Financial Conduct Authority.

Copyright © 2017 Marsh Ltd All rights reserved

GRAPHICS NO. 17-0638

