

MARSH PORTAL

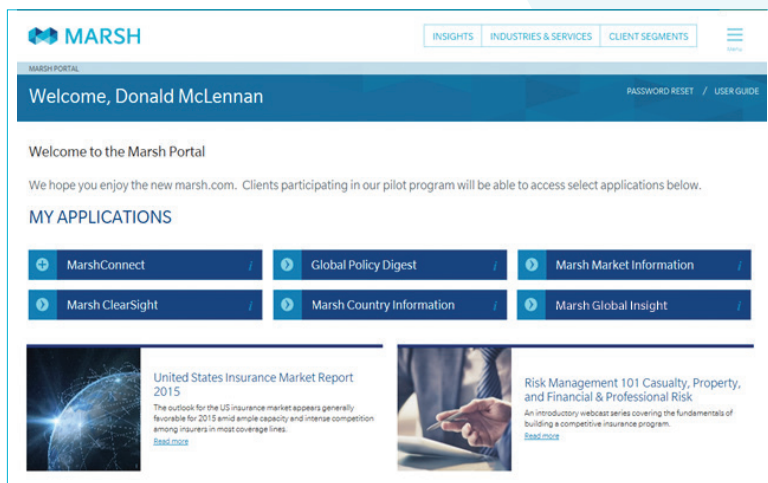


MARSH PORTAL

SIMPLIFYING ACCESS TO RISK TOOLS AND INSIGHTS

THE CHALLENGE:

- Do you need to quickly produce insurance market and policy information?
- Are you current with emerging risks, new solutions, and changing market conditions?
- Do you increasingly access information on digital platforms?
- Do you have trouble remembering passwords and finding online tools?



ONE SITE
ONE PASSWORD
MANY APPS

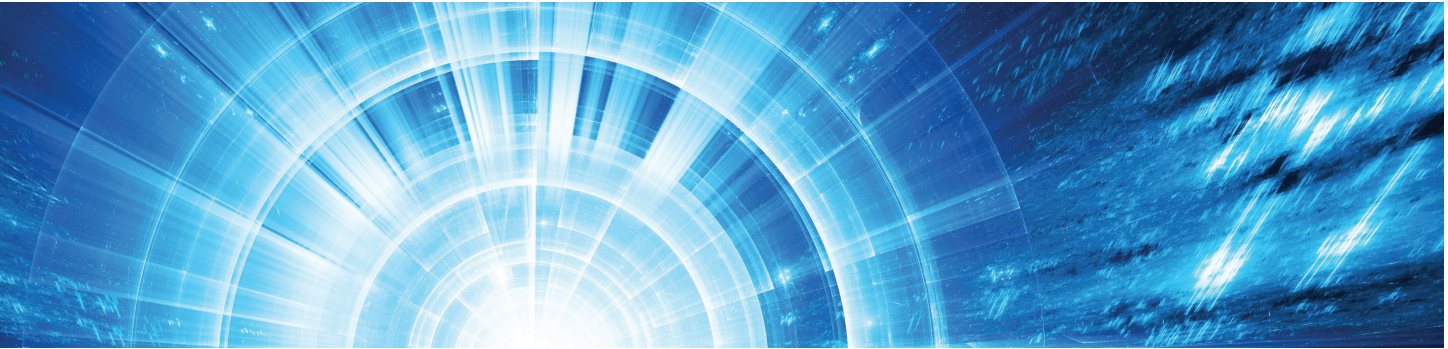
THE SOLUTION:

MARSH PORTAL

The Marsh Portal on the newly designed marsh.com makes it easy for you to use one site and password to access your applications, account information, solutions, and data and analytics. With enhanced navigation and a fresh design, the Marsh Portal provides clients easy access to the information and solutions that will enable you to make critical risk decisions with confidence.

WHO IT'S FOR

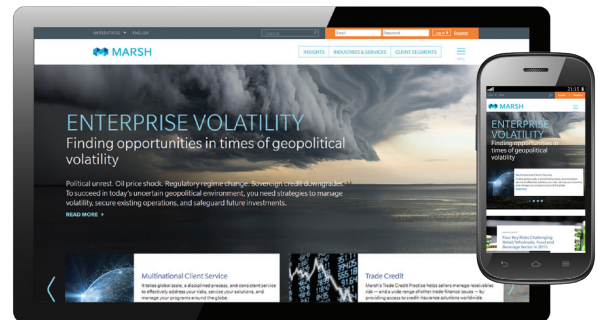
- Marsh insurance clients and risk managers
- Claims, safety, compliance and finance professionals



FEATURES

RISK INSIGHTS

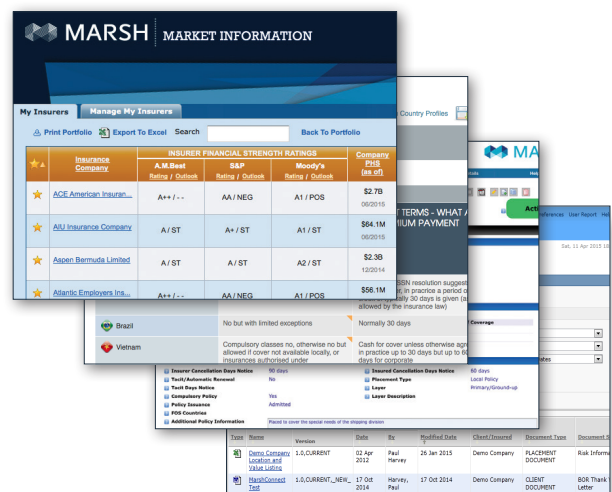
From Marsh's industry-focused experts around the world in a continually refreshed repository of insights, expertise, and best practices on mobile-friendly marsh.com.



SINGLE SIGN-ON

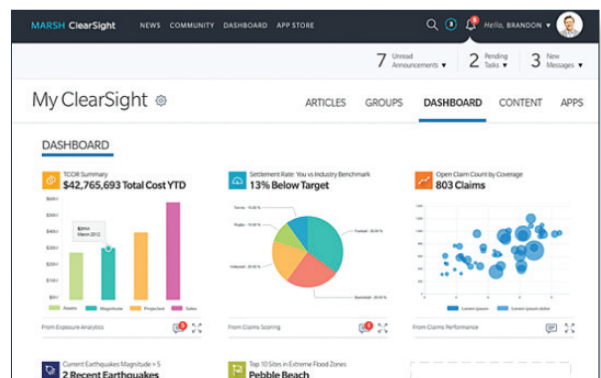
Easy, secure access via one set of credentials unlocks a wide range of Marsh tools from one site, including:

- *Marsh Market Information*: Global insurer and credit analysis.
- *Marsh Country Information*: Insurance market and regulatory topics from Axco Insurance Information Services.
- *Marsh Global Insight*: Frequently asked insurance regulatory and tax questions, local country intelligence, and network directory.
- *Global Policy Digest*: Policy documentation, summaries, and reports.
- *Documents*: Policies, endorsements, and invoices.
- *Certificate Requests*¹: Make online requests. Available for clients in the U.S. only.
- *Memorandum of Insurance*¹: Alternative way to evidence cover. Available for clients in the U.S. only.



MARSH CLEARLIGHT²

Single sign-on to one of the industry's leading risk, safety and claims platforms that brings together apps, analytics, and collaboration tools to help you optimize decisions across the risk life cycle.



¹ U.S. clients only

² Subscription required for applications



For more information about the Marsh Portal, please contact your client executive or visit our website at <http://marsh.com/clientmarkettech>.

The information contained herein is based on sources we believe reliable and should be understood to be general risk management and insurance information only. The information is not intended to be taken as advice with respect to any individual situation and cannot be relied upon as such.

Marsh Ltd is authorised and regulated by the Financial Conduct Authority.

Copyright © 2015 Marsh Ltd All rights reserved

GRAPHICS NO. 15-1320a

